

Telfort USB-Modem

Quick Start manual



Introduction

The Hi USB-Modem is a 3G multi-mode modem in USB-stick format, working in GSM-, GPRS-, EDGE-, UMTS and HSDPA networks. By USB interface it connects to a laptop or a desktop PC, it integrates the functionality of a modem and a mobile phone (SMS), and combines mobile communication with internet perfectly. It supports data and SMS services through the mobile phone network helping you break away from limitations of fixed line connections, location and network connectivity to communicate wirelessly anytime and anywhere.

Next to that, this Hi USB-Modem contains an extra slot for fitting a Micro-SD memory-card, so this modem can also be used for storage of pictures, music, documents etc., just like any other ordinary USB memory-stick.

Packing Checking

USB-Modem (1), Quick user guide (1), USB cable (1).

Specification

Interface Type	USB standard (1.0 and 2.0)
Systems supported	Supports most types of laptop and desktop PC.
Operating systems supported	Windows 2000, XP SP2, Vista Apple MAC OS X 10.3, 10.4, 10.5
Functions	SMS service, Data service, Applications management, Data concurrent, support Micro-SD card, etc.
Micro-SD Memory-card	Supported up to 4GB storage capacity
Network Standards.	HSDPA/WCDMA/EDGE/GPRS/GSM
Frequency band	HSDPA/UMTS 2100MHz, GSM/GPRS/EDGE 900/1800/1900MHz
Temperature	-20°C ~ +60°C

Quick installation guide

1) Insert the SIM/USIM card into the USB-Modem:

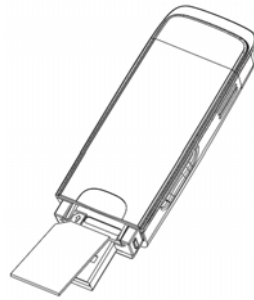
To install SIM/USIM card, first take down the modem cover, then the USB connector is visible.

Pull the plastic socket above the USB connector a little out.

Then insert the SIM/USIM card as deep as possible into the socket, here make sure that metal contact facing to the modem.

Please refer to the following picture, insert the SIM/USIM card smoothly into the modem, with the cutted edge into the stick.

Insert the (U)SIM so deep into the modem that it falls completely within the housing of the modem, and let the small plastic socket give a small click to fall into the right position.



2) Install the Micro-SD memorycard into the USB-Modem:

Install Micro-SD memory-card in the USB-Modem, if you want to use it.

Insert the Micro-SD into the SD slot from the side of the modem, the following picture indicates the correct inserting direction.



The driver of the Micro-SD card will installed automatically when the modem driver is installed.

Note: Micro-SD memory-cards with a maximum storage capacity of 4GB are supported.

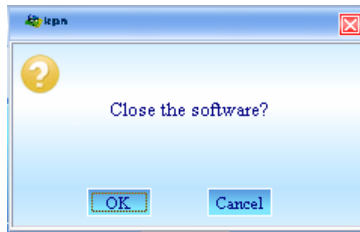
3) Connect the USB-Modem to your PC:

- Connect the USB-Stick to the USB port and ensure that it is tightly inserted.
- The modem will be atomically recognized, after that drivers and dashboard software will be correctly installed
- The computer system will automatically detect and recognize the new hardware and display the new icon in the desktop status bar, indicating that the computer and the USB-Modem have been connected properly. After a few seconds, the installation program will start automatically.

Safe removal from your system

Close the dashboard software, then the following procedure to safely remove your USB-Modem:

- Firstly click the "close" menu, and then click "OK" to close the software.









- For example in Windows XP, right click the icon from windows taskbar, the following menu shows:



Now you can safely remove your USB-Modem

How to use the USB-Modem

Various icons are presented to enable quick operation of the following functions:

	Connect to the Internet	Click "Connect to ..." button to connect to the Internet.
	SMS	Click "SMS" icon, enter recipient's number and content, and then click "Send" to send new message.
	Contacts	Click "New" to fill in a new contact person and contact details.
	Settings	Configuration for the USB-Modem, this has been correctly configured for you.
	Micro-SD	Quick link to the Micro-SD memory-card.
	Help	Show the help information.

Explanation LED Indication

In the USB-Modem there is a multi-colour-LED (light), which shows the status of the modem, using different colours and flash-signalling. In this table below an explanation is given of all different situations:

LED indication	USB-Modem working status
Red	Error Status, or Modem not ready yet, busy starting up
Green blinking	Attached to GPRS or EDGE network
Green burning	Active connection via GPRS or EDGE network
Purple blinking	Attached to UMTS or HSDPA network
Purple burning	Active connection via UMTS network
Blue burning	Active connection via HSDPA network
Light-Blue burning	Micro-SD memory-card found and ready to use

Safety Warning

To the owner

- The use of electronic transmitting devices is forbidden in aircraft, at petrol stations and in hospitals. Please observe and obey all warning signs and switch off your modem in these conditions.
- Operating USB-Modem may interfere with medical devices like hearing aides and pacemakers.
- Be aware of warning signs in places such as oil refineries or chemical factories where there are explosive gases or explosive products being processed.
- Store the USB-Modem out of the reach of children. The USB-Modem may cause injury if used as a toy or may be damaged by rough play or moisture.

Using your USB-Modem

- Only use original accessories supplied by the manufacturer. Using unauthorized accessories may invalidate your warranty.
- Avoid using the USB-Modem near or inside metallic structures or establishments that can emit electromagnetic waves.
- The USB-Modem is not waterproof, please keep it dry and store it in a cool place out of direct sunlight.
- Handle the USB-Modem with care. Don't drop, bend, knock or treat it harshly to avoid damage to the unit.
- There are no user serviceable parts. Dismantling the unit will invalidate the warranty.
- Operating temperature range of -20°C ~60°C and humidity 5%~95% are recommended.